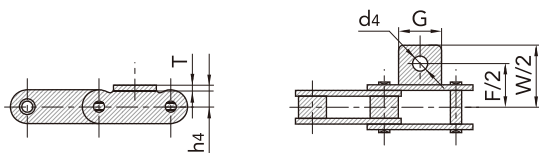


## C型钢制农机链附件 C type steel agricultural chain attachments

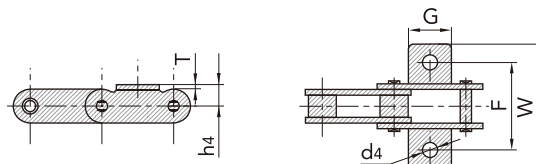
C型钢制农机链附件 C type steel agricultural chain attachments

附件号 TSI		链号 TSI	G	F	W	d4	h4	T
TSI Att. No.		TSI Chain No.	mm	mm	mm	mm	mm	mm
A1	K1	CA620	22.2	62.7	80.2	7.1	11.5	3.25
A1S	K1S	CA620	22.2	62.7	80.2	8.7	11.5	3.25

A1, A1S



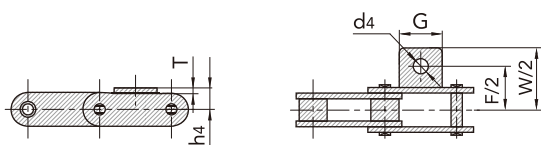
K1, K1S



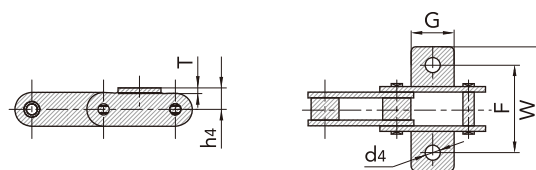
C型钢制农机链附件 C type steel agricultural chain attachments

附件号 TSI		链号 TSI	G	F	W	d4	h4	T
TSI Att. No.		TSI Chain No.	mm	mm	mm	mm	mm	mm
A1	K1	CA2060H	28.60	42.90	67.80	5.50	14.70	3.25
A1S	K1S	CA2060H	28.60	42.90	67.80	6.65	14.70	3.25
A11	K11	CA2060H	28.60	42.90	67.80	8.70	14.70	3.25
A4*	K4*	CA557	38.10	73.60	104.54	10.30	15.88	4.80
A19	K19	CA557	28.60	50.80	72.10	7.10	14.30	3.10
A25*	K25*	CA557	28.60	50.80	72.10	8.70	14.30	3.10
A26	K26	CA2060H	28.60	42.90	37.80	10.30	14.70	3.25

A1, A1S, A11, A4, A19, A25, A26



K1, K1S, K11, K4, K19, K25, K26

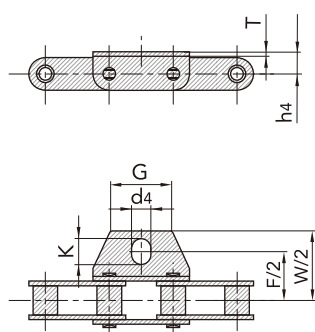


## C型钢制农机链附件 C type steel agricultural chain attachments

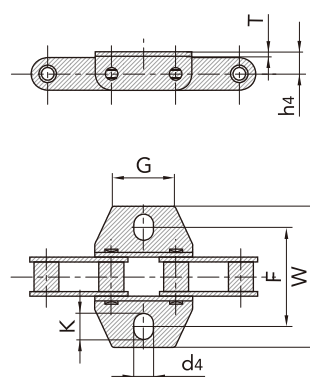
C型钢制农机链附件 C type steel agricultural chain attachments

附件号 TSI		链号 TSI	G	F	W	d4	K	h4	T
TSI Att. No.		TSI Chain No.	mm	mm	mm	mm	mm	mm	mm
A1	K1	CA624	29.0	58.0	87.0	10.5	12.50	14.0	3.0

A1



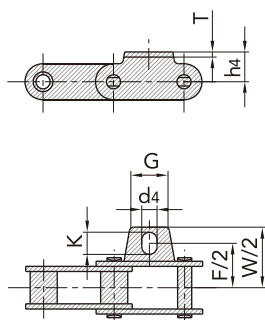
K1



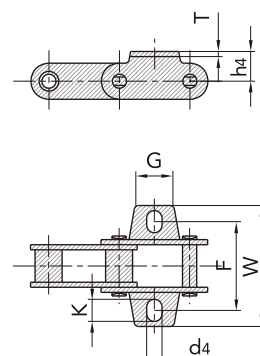
C型钢制农机链附件 C type steel agricultural chain attachments

附件号 TSI		链号 TSI	G	F	W	d4	K	h4	T
TSI Att. No.		TSI Chain No.	mm	mm	mm	mm	mm	mm	mm
A1F1	K1F1	38.4V	22.0	57.5	82.0	9.0	11.0	15.4	3.0
A1	K1	CA550	22.0	52.5	76.2	8.3	10.0	12.7	2.8
A1	K1	CA555	22.0	52.5	76.2	8.3	10.0	12.7	3.1

A1F1, A1



K1F1, K1



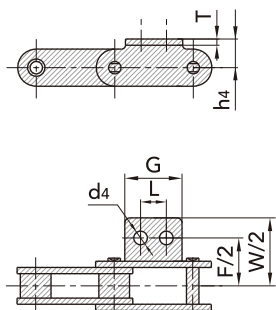
## C型钢制农机链附件

## C type steel agricultural chain attachments

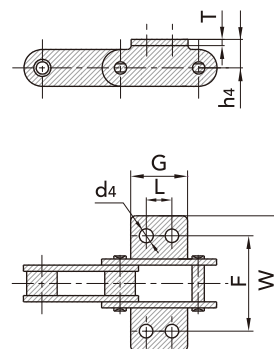
C型钢制农机链附件 C type steel agricultural chain attachments

附件号 TSI	链号 TSI	G	L	F	W	d4	h4	T
TSI Att. No.	TSI Chain No.	mm	mm	mm	mm	mm	mm	mm
A2	K2	CA2060H	28.6	14.3	42.9	67.8	5.5	14.7
A2S	K2S	CA2060H	28.6	14.3	42.9	67.8	7.1	14.7

A2, A2S



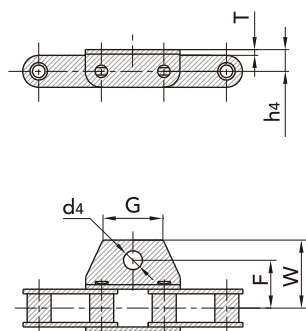
K2, K2S



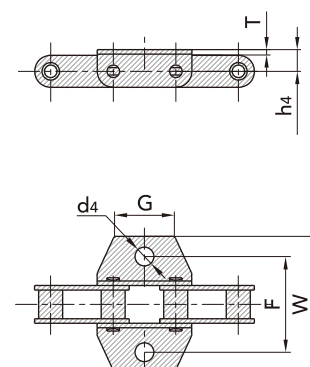
C型钢制农机链附件 C type steel agricultural chain attachments

附件号 TSI	链号 TSI	G	F	W	d4	h4	T
TSI Att. No.	TSI Chain No.	mm	mm	mm	mm	mm	mm
A18	K18	CA550R	22.6	54.0	71.6	8.5	12.7
A69	K69	38.4R	40.0	57.0	84.0	10.5	16.5
A70	K70	CA624	40.0	57.0	86.0	10.5	16.0

A18, A69, A70



K18, K69, K70



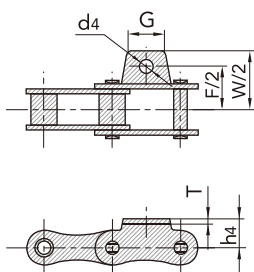
## C型钢制农机链附件

## C type steel agricultural chain attachments

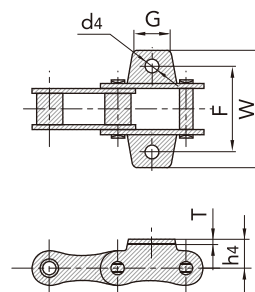
C型钢制农机链附件 C type steel agricultural chain attachments

附件号 TSI		链号 TSI	G	F	W	d4	h4	T
TSI Att. No.		TSI Chain No.	mm	mm	mm	mm	mm	mm
A220	K220	CA413	22.0	70.5	90.0	8.5	16.0	3.0

A220



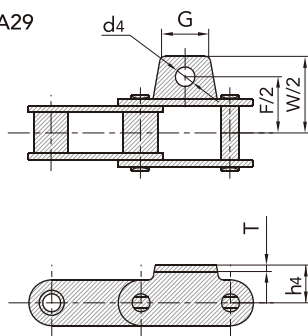
K220



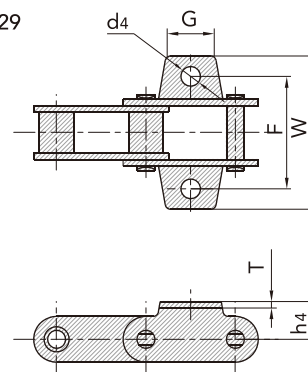
C型钢制农机链附件 C type steel agricultural chain attachments

附件号 TSI		链号 TSI	G	F	W	d4	h4	T
TSI Att. No.		TSI Chain No.	mm	mm	mm	mm	mm	mm
A1	K1	38.4V	22.0	57.5	82.0	9.0	15.4	3.0
A1	K1	CA550V	27.0	54.0	75.54	8.5	16.5	3.0
A1F1	K1F1	CA550V	27.0	50.8	75.54	8.5	16.5	3.0
A27	K27	CA550	22.2	53.9	71.4	8.7	12.7	2.8
A27S	K27S	CA550	22.2	53.9	71.4	10.3	12.7	2.8
A29	K29	CA550	22.2	50.8	71.4	10.3	12.7	2.8

A1, A1F1, A27, A27S, A29



K1, K1F1, K27, K27S, K29



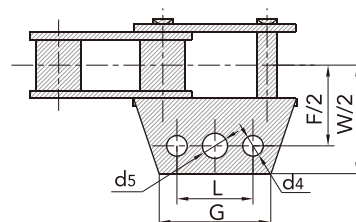
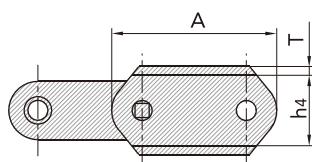
## C型钢制农机链附件

## C type steel agricultural chain attachments

C型钢制农机链附件 C type steel agricultural chain attachments

附件号 TSI	链号 TSI	A	L	G	F	W	h4	d4	d5	T
TSI Att. No.	TSI Chain No.	mm	mm	mm	mm	mm	mm	mm	mm	mm
AA3	CA550	63.5	30.22	44.45	64.1	81.4	23.88	8.25	9.9	2.8

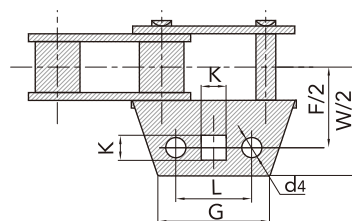
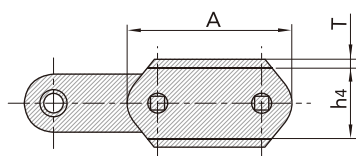
AA3



C型钢制农机链附件 C type steel agricultural chain attachments

附件号 TSI	链号 TSI	A	L	G	F	W	h4	d4	K	T
TSI Att. No.	TSI Chain No.	mm	mm	mm	mm	mm	mm	mm	mm	mm
AA3	CA557	66.55	30.22	44.45	60.54	86.6	23.9	8.25	9.7	3.5

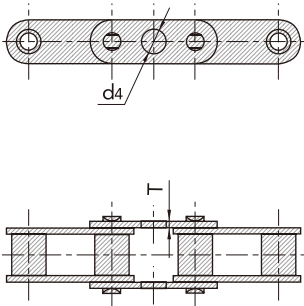
AA3



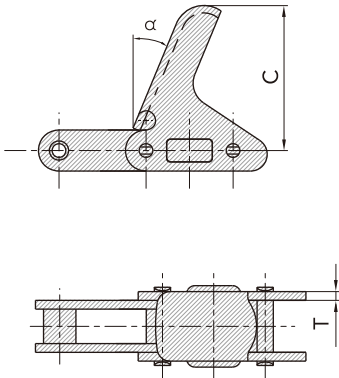
C型钢制农机链附件

C type steel agricultural chain attachments

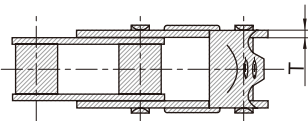
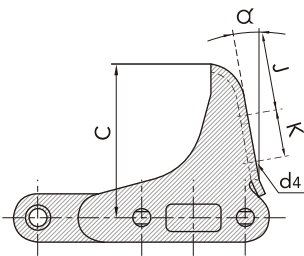
C型钢制农机链附件			
附件号 TSI	链号 TSI	d4	T
TSI Att. No.	TSI Chain No.	mm	mm
B1	CA2060H	8.33	3.25



C type steel agricultural chain attachments				
附件号 TSI	链号 TSI	$\alpha$	C	T
TSI Att. No.	TSI Chain No.		mm	mm
C2E	CA2060H	22.5°	76.20	3.25



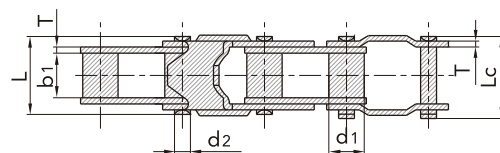
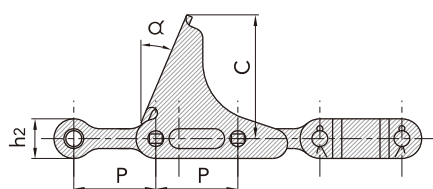
C型钢制农机链附件 C type steel agricultural chain attachments							
附件号 TSI	链号 TSI	$\alpha$	C	K	J	d4	T
TSI Att. No.	TSI Chain No.		mm	mm	mm	mm	mm
C3E	CA555	10°	61.5	19.0	22.5	7.0	3.1



## C型钢制农机链附件 C type steel agricultural chain attachments

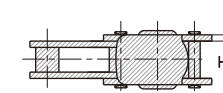
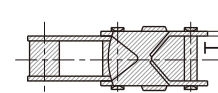
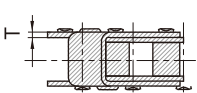
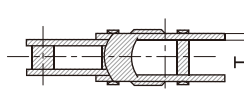
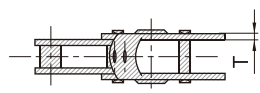
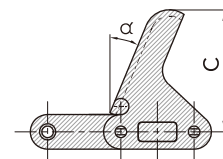
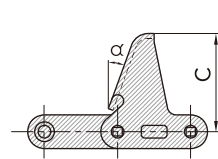
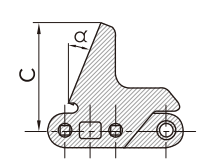
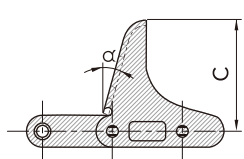
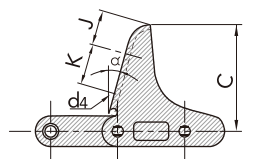
C型钢制农机链附件 C type steel agricultural chain attachments

附件 TSI	链号 TSI	节距 Pitch	滚子直径 Roller diameter	内节内宽 Width between inner plates	销轴直径 Pin diameter	销轴长度 Pin length		链板尺寸 Plate dimension		附件尺寸 Attachment dimension		极限拉伸载荷 Ultimate tensile strength	平均拉伸载荷 Average tensile strength
TSI Att. No.	TSI Chain No.	P	d <sub>1</sub> max	b <sub>1</sub> min	d <sub>2</sub> max	L max	L <sub>c</sub> max	h <sub>2</sub> max	t/T max	C	α	Q <sub>min</sub>	q
		mm	mm	mm	mm	mm	mm	mm	mm	mm		kN/lbf	kN
C5E	ZGS41.4	41.4	17.85	23.0	8.2	39.5	41.4	20.0	3.0	62.5	23°	39.1/8795	2.82
C6E	ZGS41.4	41.4	17.85	23.0	8.2	39.5	41.4	20.0	3.0	84.0	23°	39.1/8795	2.99



C型钢制农机链附件 C type steel agricultural chain attachments

附件号 TSI	链号 TSI	α	C	K	J	d4	T
TSI Att. No.	TSI Chain No.		mm	mm	mm	mm	mm
C6E	CA550	20.0°	55.60				2.8
C6E	CA555	15.0°	63.50				3.1
C6EJ	CA555	15.0°	66.00	25.5	21.5	7.0	3.1
C6E	CA2060H	22.5°	63.50				3.25
C6E	CA2801	22.0°	63.85				3.0

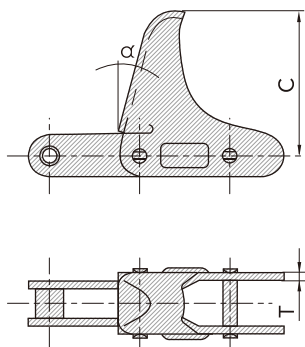


## C型钢制农机链附件

## C type steel agricultural chain attachments

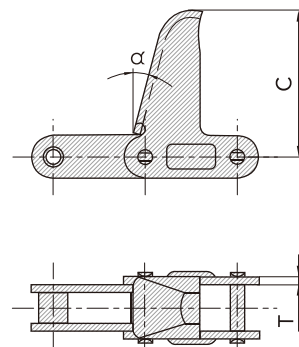
C型钢制农机链附件

附件号 TSI	链号 TSI	$\alpha$	C	T
TSI Att. No.	TSI Chain No.		mm	mm
C11E	CA550	17.0°	63.5	2.8



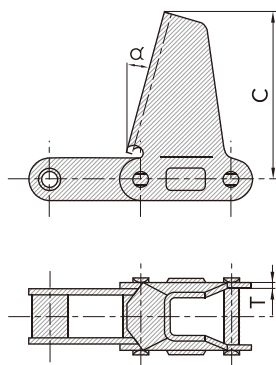
C type steel agricultural chain attachments

附件号 TSI	链号 TSI	$\alpha$	C	T
TSI Att. No.	TSI Chain No.		mm	mm
C13E	CA620	15.0°	92.1	3.25
C13E	CA550	15.0°	92.1	2.80



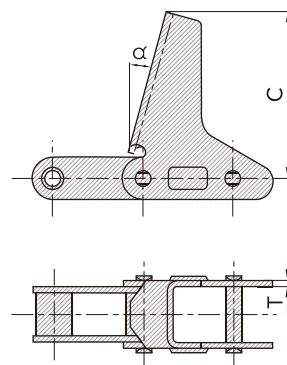
C型钢制农机链附件

附件号 TSI	链号 TSI	$\alpha$	C	T
TSI Att. No.	TSI Chain No.		mm	mm
C17E	CA550	20.0°	76.2	2.8



C type steel agricultural chain attachments

附件号 TSI	链号 TSI	$\alpha$	C	T
TSI Att. No.	TSI Chain No.		mm	mm
C17E	CA555	22.5°	76.2	3.25



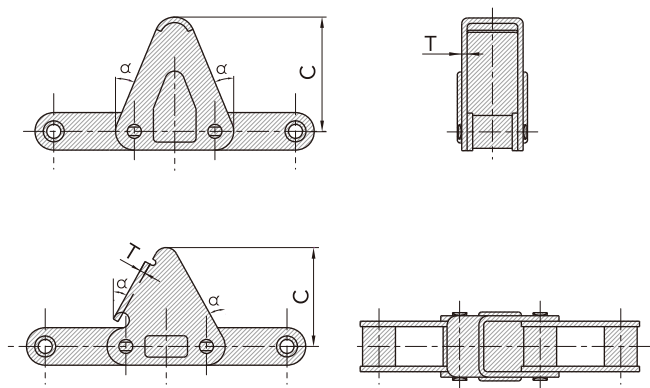


## C型钢制农机链附件

## C type steel agricultural chain attachments

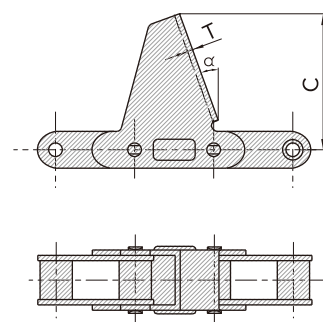
C型钢制农机链附件

附件号 TSI	链号 TSI	$\alpha$	C	T
TSI Att. No.	TSI Chain No.		mm	mm
C30E	CA620	22.5°	58.7	3.25
	CA550	29.0°	50.8	2.80



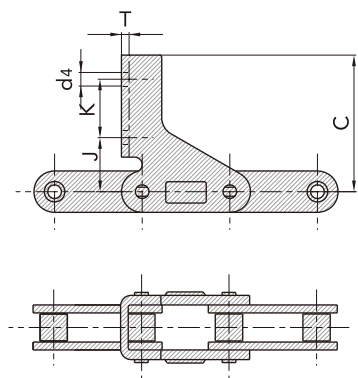
C type steel agricultural chain attachments

附件号 TSI	链号 TSI	$\alpha$	C	T
TSI Att. No.	TSI Chain No.		mm	mm
CPE	CA550	20.0°	74.5	2.8



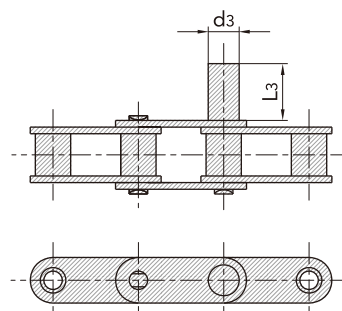
C型钢制农机链附件

附件号 TSI	链号 TSI	K	J	d4	C	T
TSI Att. No.	TSI Chain No.	mm	mm	mm	mm	mm
CPE	C2060H	25.4	23.5	5.9	59.4	3.25



C type steel agricultural chain attachments

附件号 TSI	链号 TSI	d3	L3
TSI Att. No.	TSI Chain No.	mm	mm
D1EP	CA550	12.7	31.75
D1EP	CA620	12.7	44.45
D1EP1	CA620	14.3	31.75
D1EP2	CA550	12.7	50.80
D1EP5	CA620	12.7	38.10
D1ERS	CA620	14.3	38.10

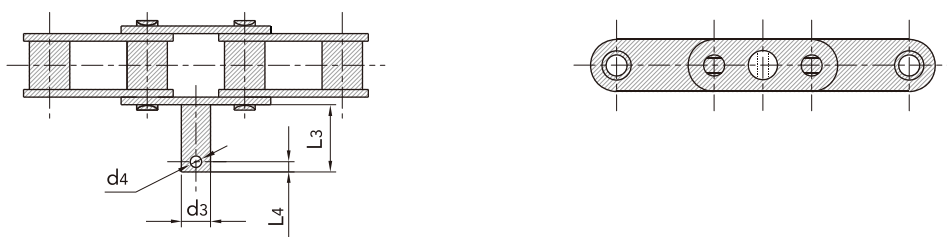


## C型钢制农机链附件

## C type steel agricultural chain attachments

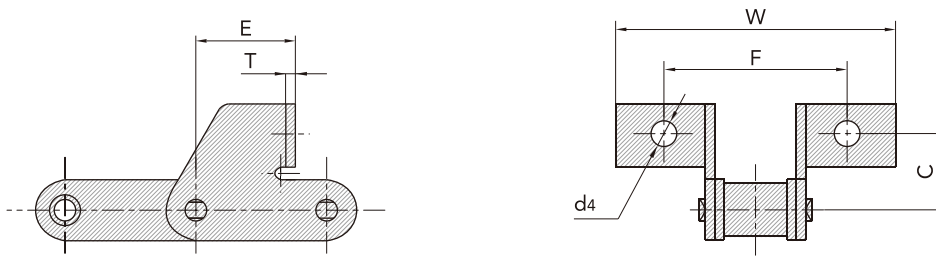
C型钢制农机链附件 C type steel agricultural chain attachments

附件号 TSI	链号 TSI	L3	d3	L4	d4
TSI Att. No.	TSI Chain No.	mm	mm	mm	mm
D11	CA550	25.4	12.7	4.8	3.6



C型钢制农机链附件 C type steel agricultural chain attachments

附件号 TSI	链号 TSI	F	W	C	d4	E	T
TSI Att. No.	TSI Chain No.	mm	mm	mm	mm	mm	mm
F1	CA624	52.0	73.0	24.0	8.3	38.4	3.0
F45	38.4R	52.0	69.8	24.0	8.4	37.5	2.5
SDF1	38.4R	52.0	70.0	24.5	8.4	38.4	2.5
SD	38.4R	52.0	69.8	24.0	8.4	38.4	3.0

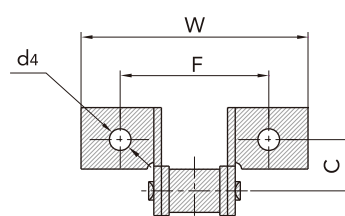
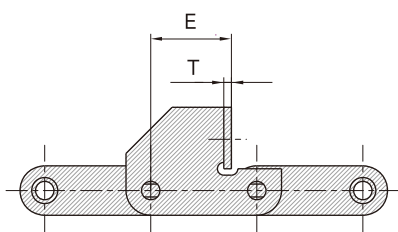


## C型钢制农机链附件

## C type steel agricultural chain attachments

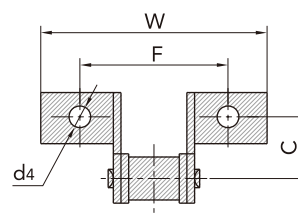
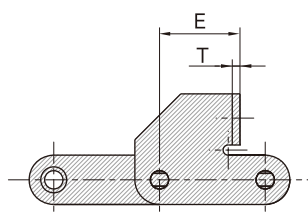
C型钢制农机链附件 C type steel agricultural chain attachments

附件号 TSI	链号 TSI	F	W	C	d4	E	T
TSI Att. No.	TSI Chain No.	mm	mm	mm	mm	mm	mm
F1*	CA550	62.0	84.0	20.0	8.6	32.5	2.8
F1	CA550R	58.0	88.6	20.0	6.2	31.5	3.1



C型钢制农机链附件 C type steel agricultural chain attachments

附件号 TSI	链号 TSI	F	W	C	d4	E	T
TSI Att. No.	TSI Chain No.	mm	mm	mm	mm	mm	mm
F4	CA550	47.6	71.4	31.0	8.6	36.9	2.8

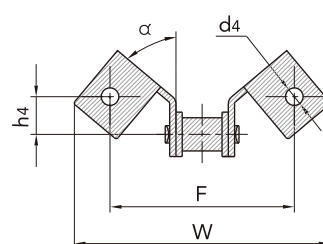
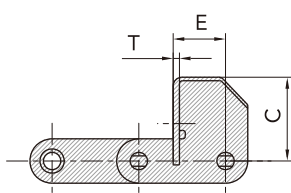


## C型钢制农机链附件

## C type steel agricultural chain attachments

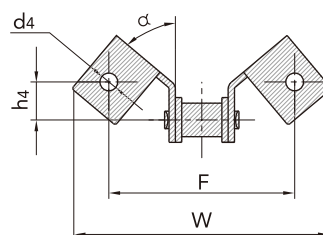
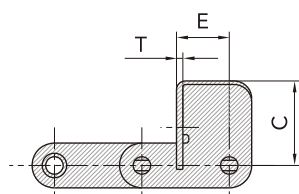
C型钢制农机链附件 C type steel agricultural chain attachments

附件号 TSI	链号 TSI	F	W	C	h4	E	d4	T	$\alpha$
TSI Att. No.	TSI Chain No.	mm	mm	mm	mm	mm	mm	mm	
F14	CA550	79.25	103.84	31.75	15.75	20.32	10.0	2.8	65.0°
SE	CA550	79.38	106.58	31.75	15.88	21.34	8.6	2.8	57.0°
SF	CA550	79.38	106.58	31.75	15.88	21.34	10.3	2.8	57.0°
SFD	CA550HD	79.38	109.73	50.11	28.58	24.28	8.33	3.1	22.0°



C型钢制农机链附件 C type steel agricultural chain attachments

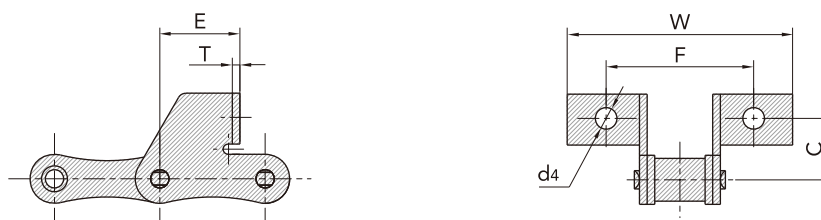
附件号 TSI	链号 TSI	F	W	C	h4	E	d4	T	$\alpha$
TSI Att. No.	TSI Chain No.	mm	mm	mm	mm	mm	mm	mm	
F15	CA550	79.0	107.20	33.5	14.85	19.0	8.5	2.8	67.5°
F17	CA550	114.3	139.42	41.0	20.60	25.4	10.0	2.8	60.0°



## C型钢制农机链附件 C type steel agricultural chain attachments

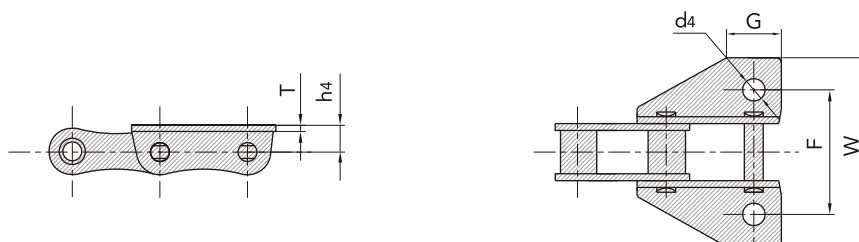
C型钢制农机链附件 C type steel agricultural chain attachments

附件号 TSI	链号 TSI	F	W	C	d4	E	T
TSI Att. No.	TSI Chain No.	mm	mm	mm	mm	mm	mm
F4	CA413	60.0	83.5	25.0	6.5	28.6	3.0



C型钢制农机链附件 C type steel agricultural chain attachments

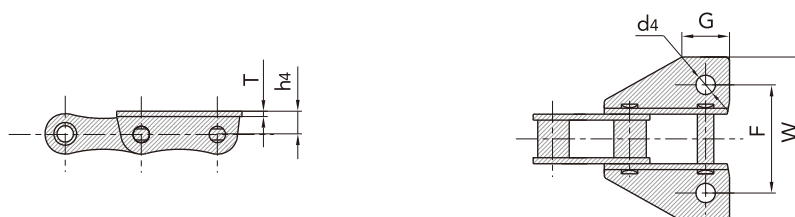
附件号 TSI	链号 TSI	F	W	C	d4	E	T
TSI Att. No.	TSI Chain No.	mm	mm	mm	mm	mm	mm
K39	A550	31.8	50.80	71.4	8.33	12.7	2.8
K39G	A550	31.8	54.00	71.4	6.75	12.7	2.8
K39M	A550	31.8	50.80	71.4	9.92	12.7	2.8
K39M	A557	31.0	57.15	78.0	10.5	14.2	3.1
K39S	A550	19.1	50.80	71.4	8.33	12.7	2.8



## C型钢制农机链附件 C type steel agricultural chain attachments

C型钢制农机链附件 C type steel agricultural chain attachments

附件号 TSI	链号 TSI	G	F	W	d4	h4	T
TSI Att. No.	TSI Chain No.	mm	mm	mm	mm	mm	mm
K35	CA557	31.8	50.80	73.4	8.7	13.8	3.1
K35M	CA557	31.8	50.80	73.4	10.3	13.8	3.1
AK39*	CA550	31.8	50.80	71.4	8.6	12.7	2.8
K39	CA557	31.8	57.15	73.6	8.7	13.8	3.1
K39M	CA550HD	31.8	57.15	77.6	10.2	14.0	3.1
AK39M*	CA550	31.8	50.80	71.4	10.3	12.7	2.8
AK39S*	CA550	19.1	50.80	71.4	8.6	12.7	2.8



C型钢制农机链附件 C type steel agricultural chain attachments

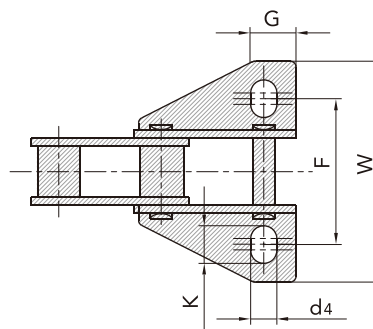
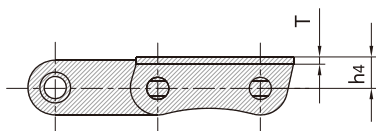
附件号 TSI	链号 TSI	F	W	d4	G	C	h4	T
TSI Att. No.	TSI Chain No.	mm	mm	mm	mm	mm	mm	mm
K39	CA555	42.9	60.3	6.75	21.8	2.5	19.1	3.1



## C型钢制农机链附件 C type steel agricultural chain attachments

C型钢制农机链附件 C type steel agricultural chain attachments

附件号 TSI	链号 TSI	G	F	W	d4	K	h4	T
TSI Att. No.	TSI Chain No.	mm	mm	mm	mm	mm	mm	mm
K39M	CA557	29.5	50.8	71.4	9.9	13.0	12.7	3.1

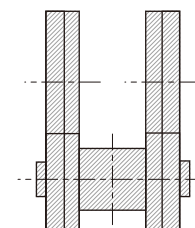
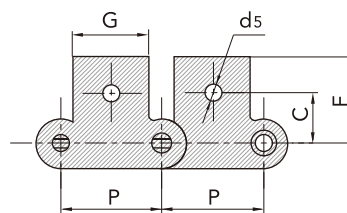
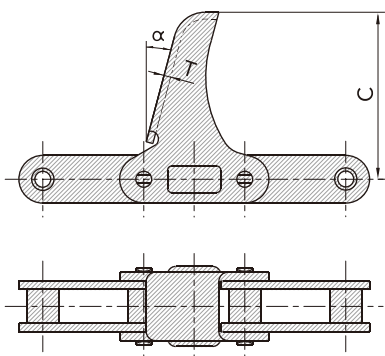


C型钢制农机链附件

附件号 TSI	链号 TSI	$\alpha$	C	T
TSI Att. No.	TSI Chain No.		mm	mm
LV41N	CA550	15.0°	68.5	2.8

C type steel agricultural chain attachments

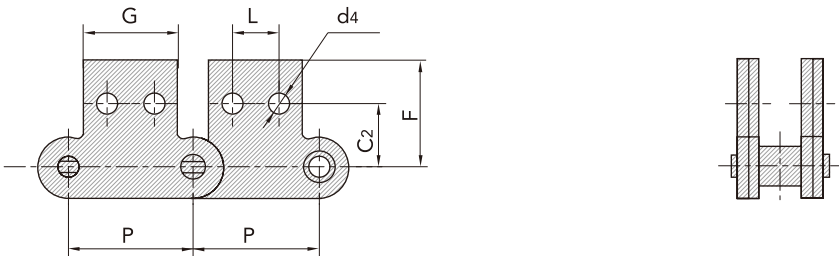
附件号 TSI	链号 TSI	G	C	F	d4	T
TSI Att. No.	TSI Chain No.	mm	mm	mm	mm	mm
M1	C2060H	28.6	17.5	32.9	9.2	3.25



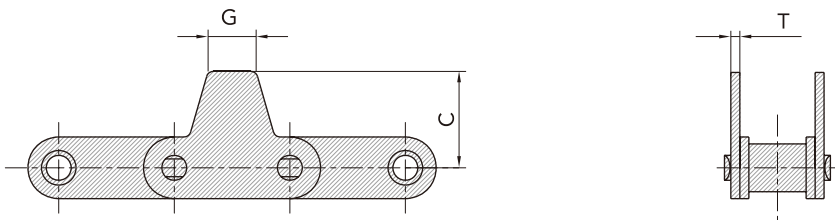
C型钢制农机链附件

C type steel agricultural chain attachments

C型钢制农机链附件 C type steel agricultural chain attachments							
附件号 TSI	链号 TSI	G	L	C	F	d4	T
TSI Att. No.	TSI Chain No.	mm	mm	mm	mm	mm	mm
M2	CA2060H	28.6	14.3	19.1	32.9	5.5	3.25



C型钢制农机链附件 C type steel agricultural chain attachments				
附件号 TSI	链号 TSI	C	G	T
TSI Att. No.	TSI Chain No.	mm	mm	mm
M19	CA550	30.1	22.2	2.8



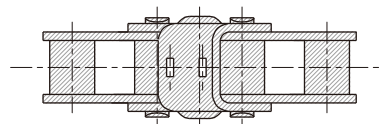
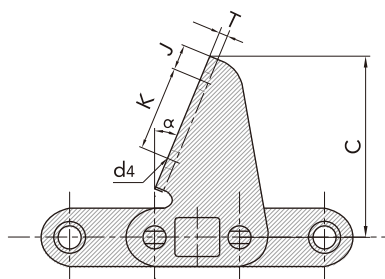


## C型钢制农机链附件

## C type steel agricultural chain attachments

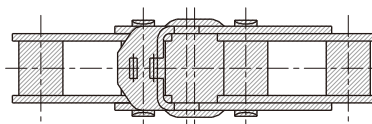
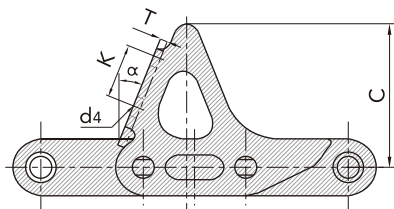
C型钢制农机链附件 C type steel agricultural chain attachments

附件号 TSI	链号 TSI	$\alpha$	K	J	T	C	d4
TSI Att. No.	TSI Chain No.		mm	mm	mm	mm	mm
M20	CA627	22.5°	30	9.0	3.0	64	6.5 X 6.5



C型钢制农机链附件 C type steel agricultural chain attachments

附件号 TSI	链号 TSI	$\alpha$	K	T	C	d4
TSI Att. No.	TSI Chain No.		mm	mm	mm	mm
M22	S55H	22.0°	21.8	3.0	58	8.2 X 8.2

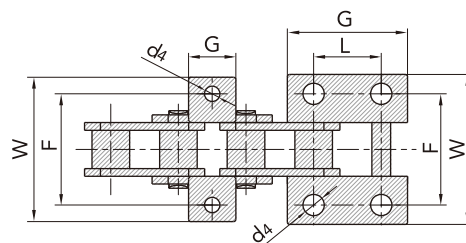
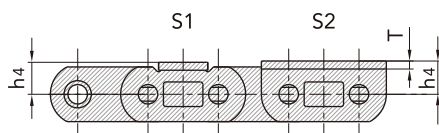


## C型钢制农机链附件

## C type steel agricultural chain attachments

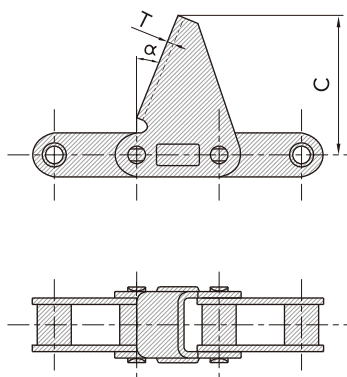
C型钢制农机链附件 C type steel agricultural chain attachments

附件号 TSI	链号 TSI	L	G	F	W	h4	d4	T
TSI Att. No.	TSI Chain No.	mm	mm	mm	mm	mm	mm	mm
S1	CAE44151		20.0	47.0	61.0	13.0	6.5	3.25
S2	CAE44151	28.58	51.0	47.0	62.4	13.5	9.0	.325



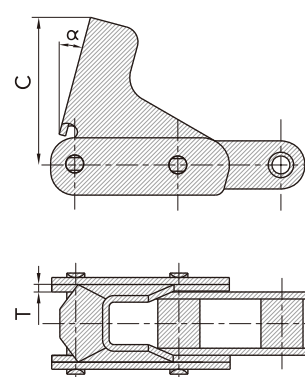
C型钢制农机链附件

附件号 TSI	链号 TSI	$\alpha$	C	T
TSI Att. No.	TSI Chain No.		mm	mm
S81	CA624	22.0°	65.0	3.0



C type steel agricultural chain attachments

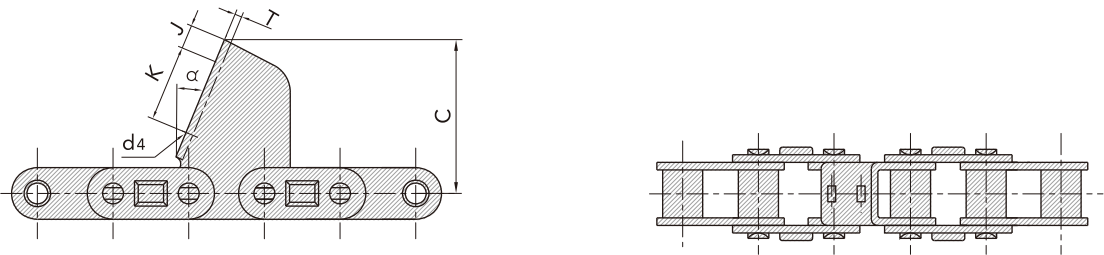
附件号 TSI	链号 TSI	$\alpha$	C	T
TSI Att. No.	TSI Chain No.		mm	mm
TC61	CA550	20.0°	60.0	3.25



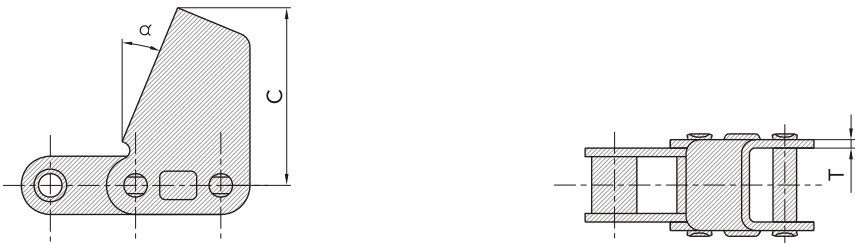
C型钢制农机链附件

C type steel agricultural chain attachments

C型钢制农机链附件 C type steel agricultural chain attachments							
附件号 TSI	链号 TSI	$\alpha$	C	K	J	d4	T
TSI Att. No.	TSI Chain No.		mm	mm	mm	mm	mm
TM91	CA2801	22.5°	62.5	30.0	10.5	6.3 X 6.3	3.0



C型钢制农机链附件 C type steel agricultural chain attachments				
附件号 TSI	链号 TSI	$\alpha$	C	T
TSI Att. No.	TSI Chain No.		mm	mm
TM91E	CA2801	22.5°	62.5	3.0

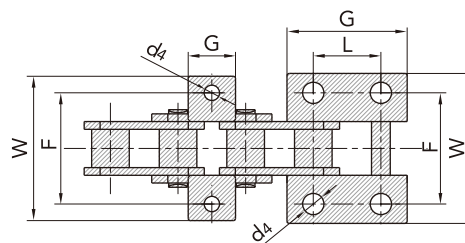
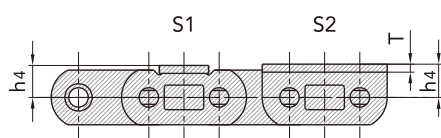


## C型钢制农机链附件

## C type steel agricultural chain attachments

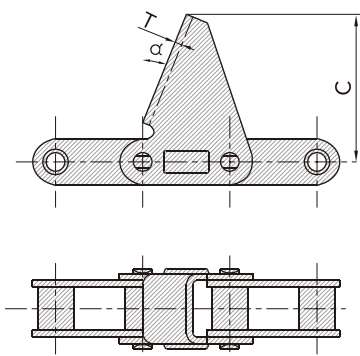
C型钢制农机链附件 C type steel agricultural chain attachments

附件号 TSI	链号 TSI	L	G	F	W	h4	d4	T
TSI Att. No.	TSI Chain No.	mm	mm	mm	mm	mm	mm	mm
S1	CAE44151		20.0	47.0	61.0	13.0	6.5	3.25
S2	CAE44151	28.58	51.0	47.0	62.4	13.5	9.0	3.25



C型钢制农机链附件

附件号 TSI	链号 TSI	$\alpha$	C	T
TSI Att. No.	TSI Chain No.		mm	mm
S81	CA624	22.0°	65.0	3.0



C type steel agricultural chain attachments

附件号 TSI	链号 TSI	$\alpha$	C	T
TSI Att. No.	TSI Chain No.		mm	mm
TC61	CA550	20.0°	60.0	3.25

